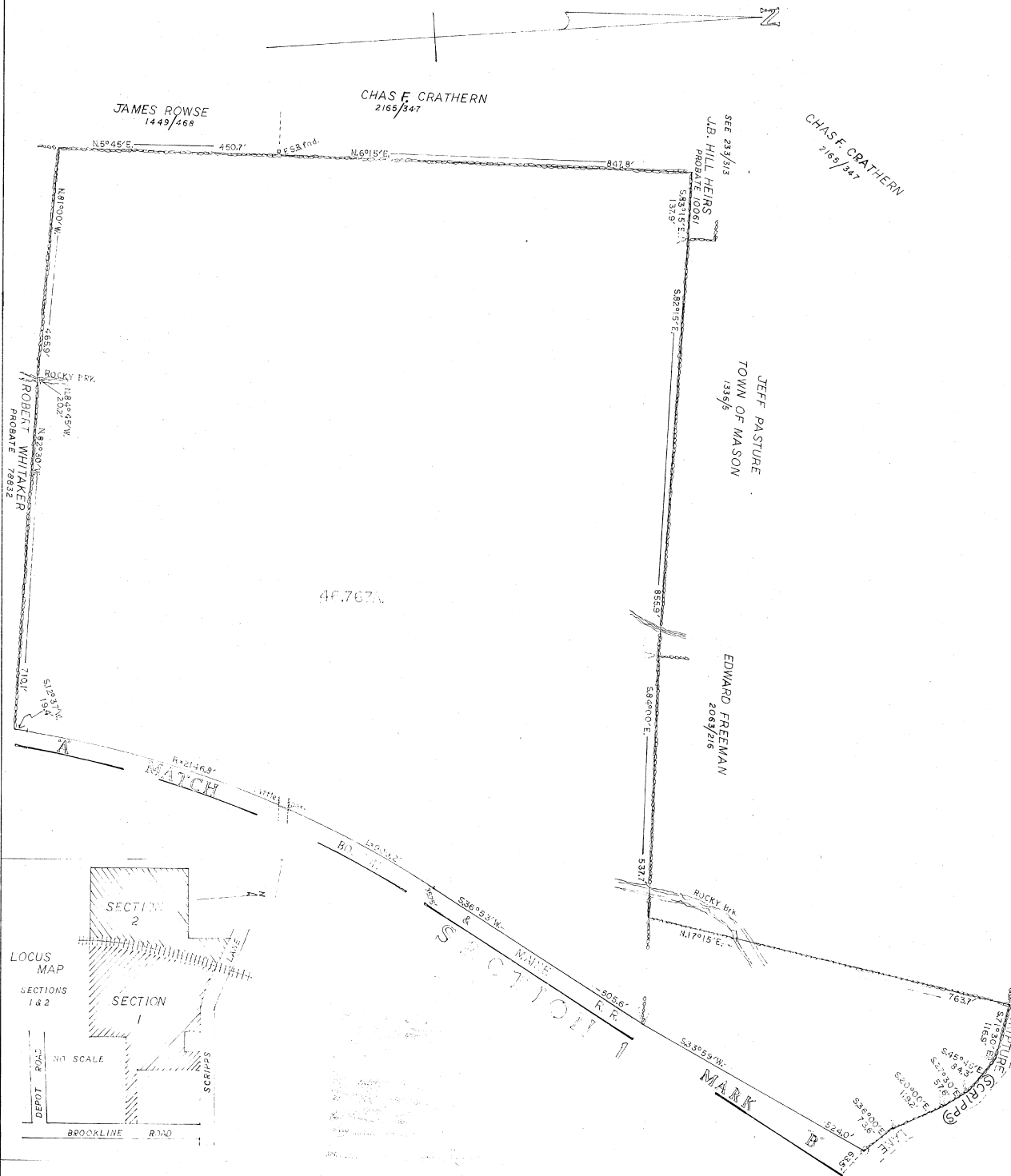


PL 10698
DW 18
2 of 2



SURVEYED FOR
WILLIAM D. ADAMS

WALTON - N.H.
Probate - 2425/461
VOL - 2425/461
SCALE - 1" = 100'
AUGUST - 1976
WARRER PASTURE
& TRAIL

HIRAM ELLIOTT
DATE TRV

120.299 Acres total

STAFF COMPASS
&
TAPE

2 SHEETS

SECTION 2

NOT RECORDED
1981 N.Y.
ADAMS - 11-11-1981
HILLSDOUGH COUNTY
DEPT. OF DEEDS
RECORDED
DATE **Oct. 27, 1977**
By *[Signature]* CLERK
By *[Signature]* SECRETARY

Sheet #2 of 2